

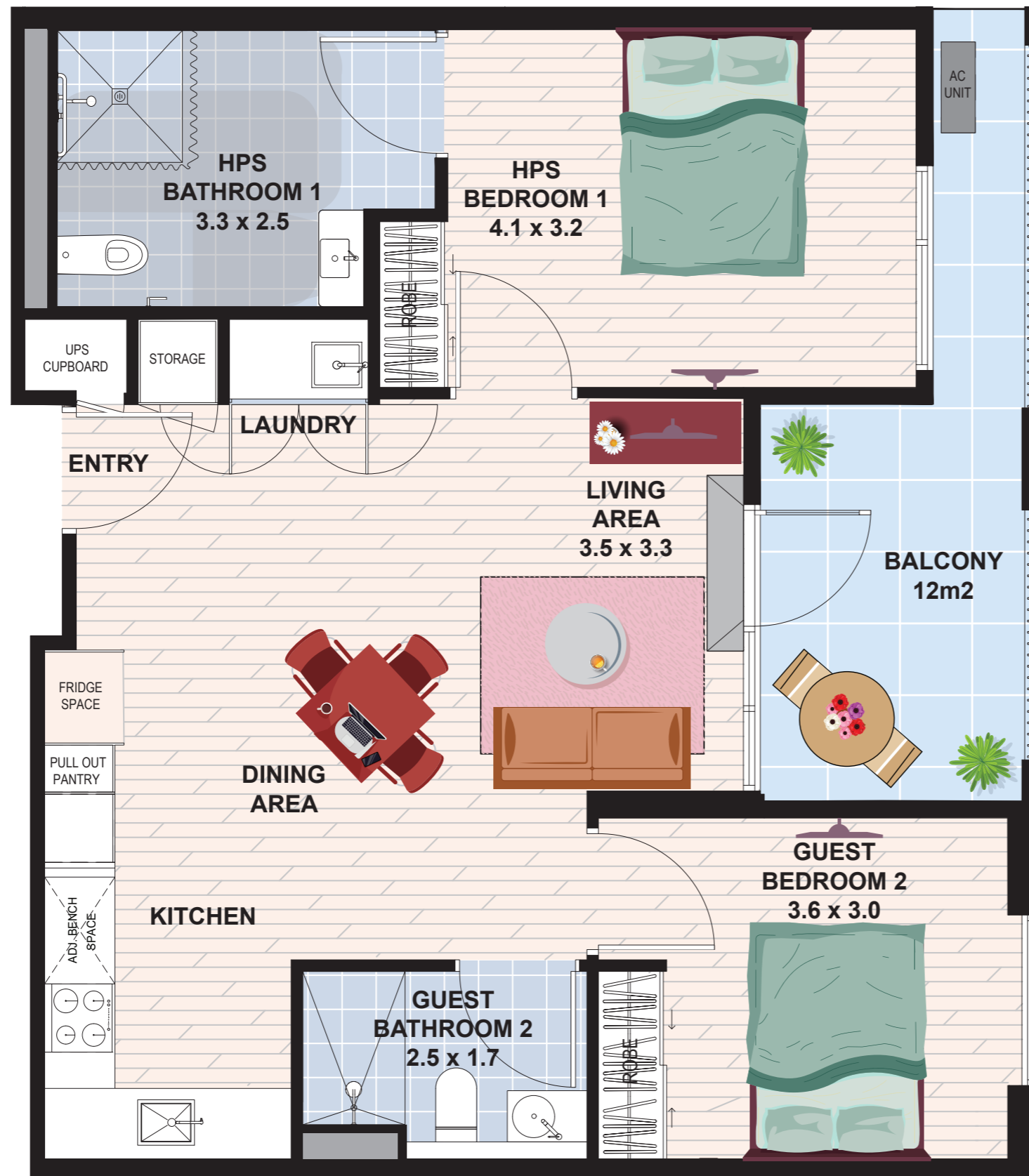
COBURG COLLECTIVE
200 Sydney Road,
COBURG VIC 3058

TYPE 02

Internal Area 79.5 m²

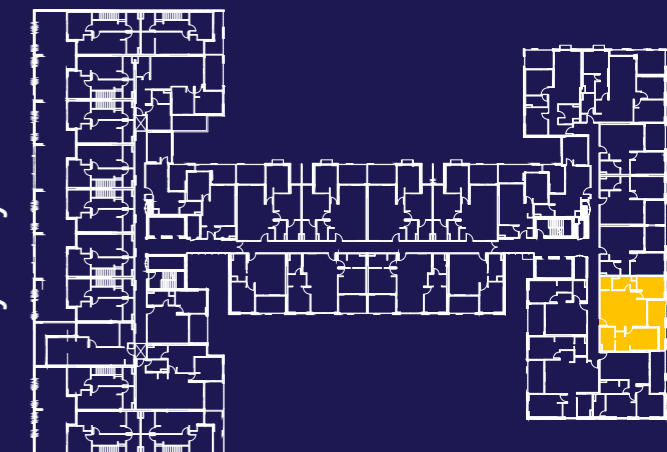
External Area 12.4 m²

TOTAL AREA 91.1 m²



NOTE: DESIGNS SUBJECT TO CHANGE

Sydney Road



**IMPROVED
LIVEABILITY**



**FULLY
ACCESSIBLE**



**HIGH PHYSICAL
SUPPORT**

enliven HOUSING

Enquiries 1300 ENLIVEN
enlivenhousing.com.au