

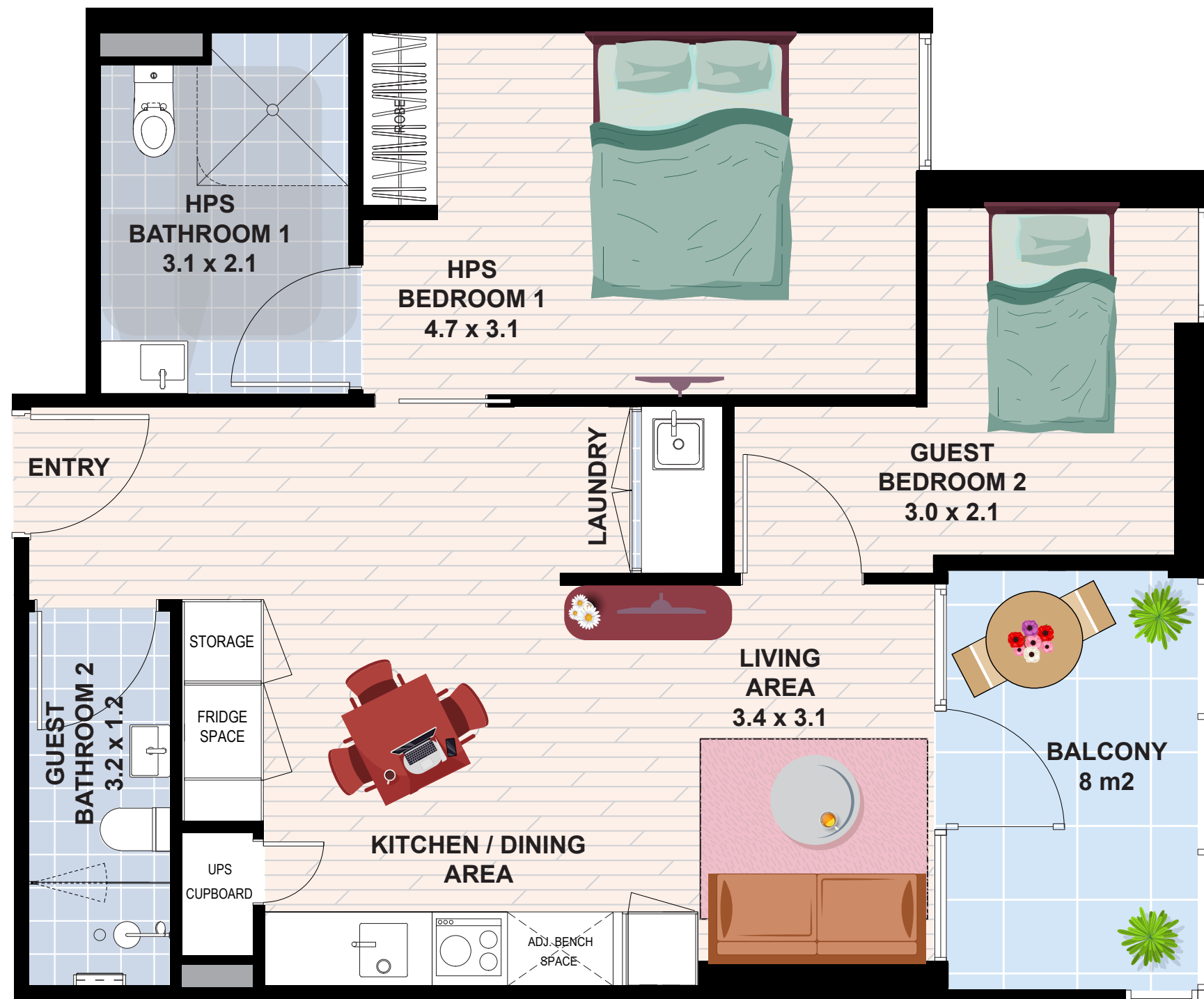
CROSSLEY & BOURKE
6 Cross Street
FOOTSCRAY VIC 3011

TYPE 01

Internal Area 70 m²

External Area 8 m²

TOTAL AREA 78 m²



NOTE: DESIGNS SUBJECT TO CHANGE



IMPROVED LIVEABILITY



FULLY ACCESSIBLE



HIGH PHYSICAL SUPPORT

enliven HOUSING

Enquiries 1300 ENLIVEN
enlivenhousing.com.au

