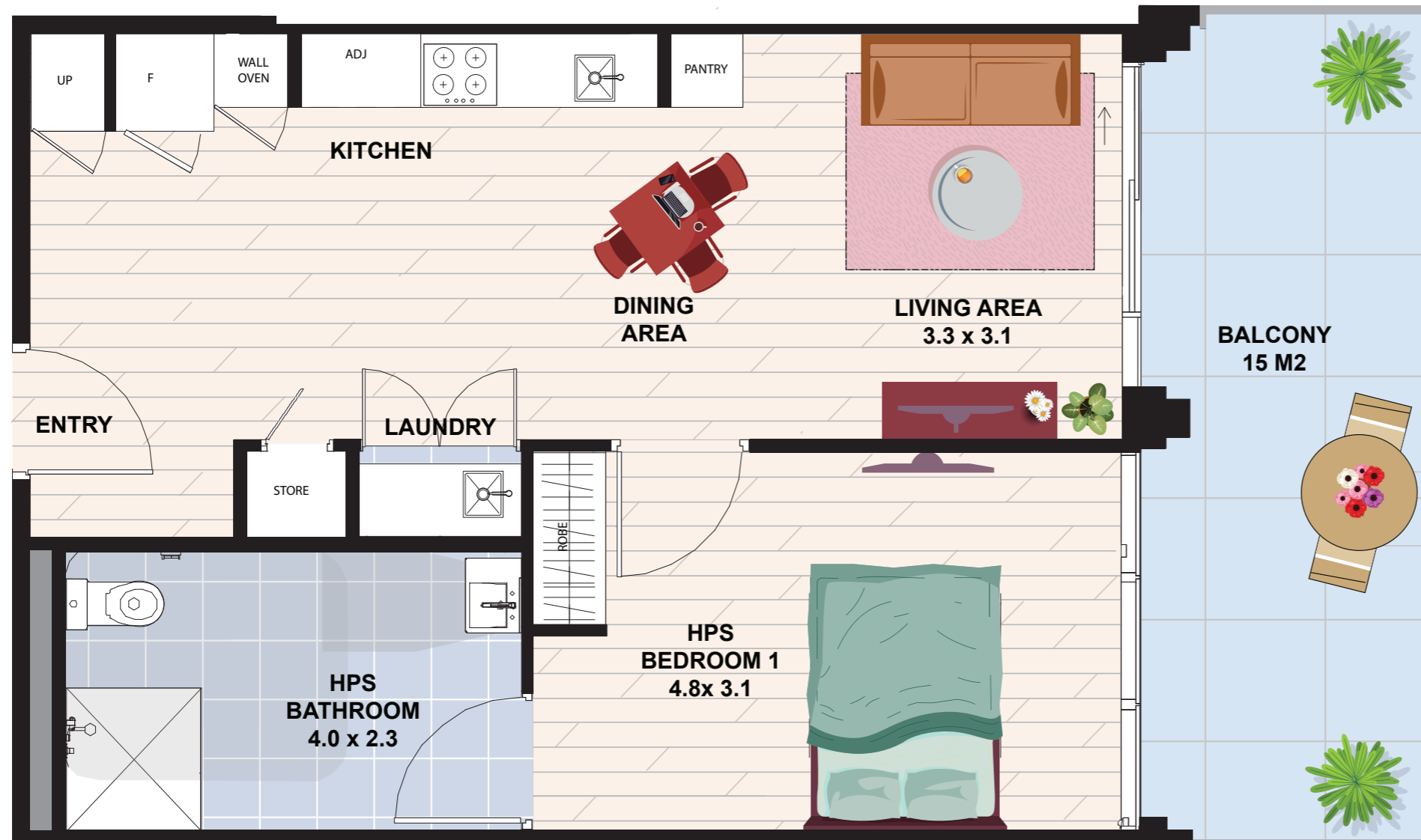


TYPE 01

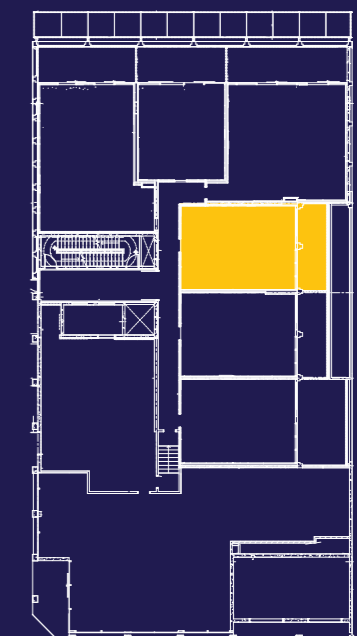
Internal Area 62m²
External Area 15m²
TOTAL AREA 77m²



NOTE: DESIGNS SUBJECT TO CHANGE



Ryrie Street



**IMPROVED
LIVEABILITY**



**FULLY
ACCESSIBLE**



**HIGH PHYSICAL
SUPPORT**

enliven HOUSING

Enquiries 1300 ENLIVEN
enlivenhousing.com.au