

TYPE 02

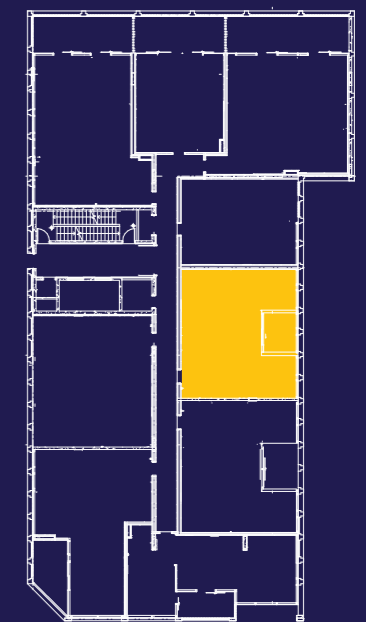
Internal Area 82m²

External Area 7m²

TOTAL AREA 89m²



Ryrie Street



NOTE: DESIGNS SUBJECT TO CHANGE



**IMPROVED
LIVEABILITY**



**FULLY
ACCESSIBLE**



**HIGH PHYSICAL
SUPPORT**

enliven HOUSING

**Enquiries 1300 ENLIVEN
enlivenhousing.com.au**