

TYPE 03

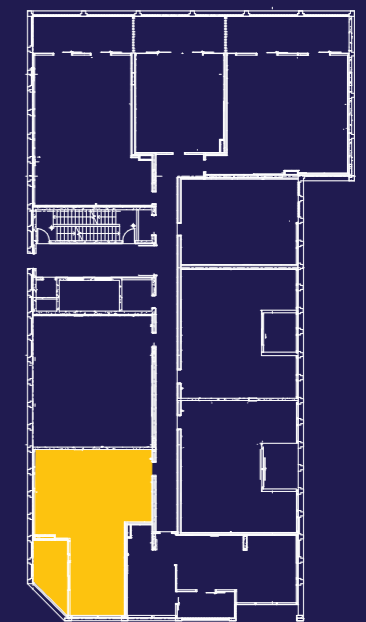
Internal Area 87m²

External Area 11m²

TOTAL AREA 98m²



Ryrie Street



NOTE: DESIGNS SUBJECT TO CHANGE



**IMPROVED
LIVEABILITY**



**FULLY
ACCESSIBLE**



**HIGH PHYSICAL
SUPPORT**

enliven HOUSING

**Enquiries 1300 ENLIVEN
enlivenhousing.com.au**