

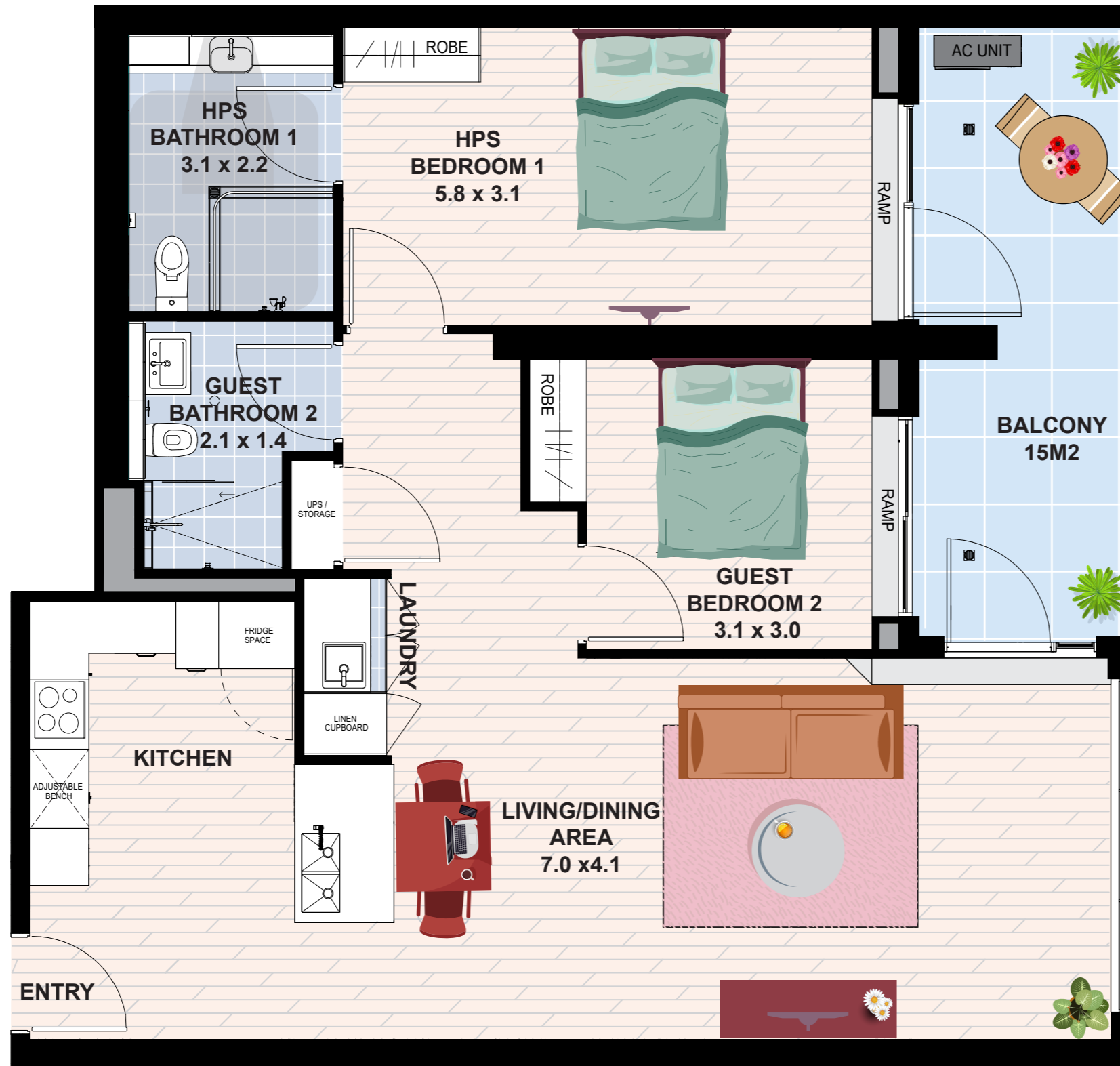
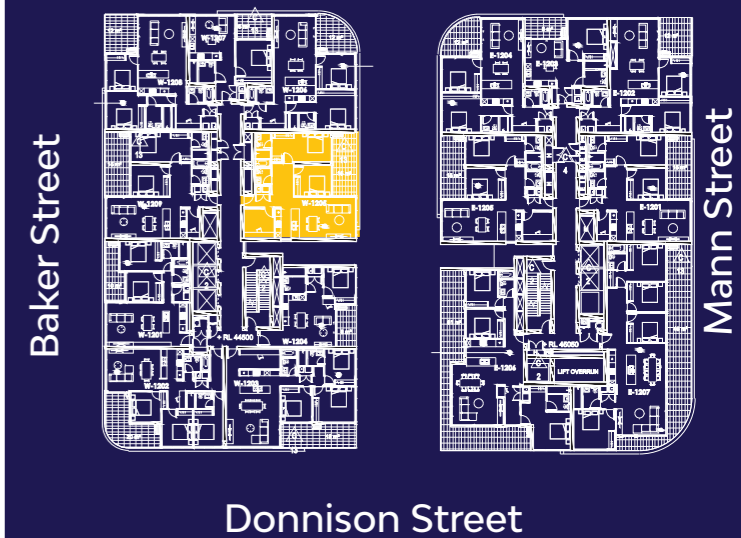
THE ARCHIBALD
108 Donnison Street
GOSFORD NSW 2250

TYPE 01

Internal Area 95 m²

External Area 15 m²

TOTAL AREA 110 m²



NOTE: DESIGNS SUBJECT TO CHANGE



IMPROVED LIVEABILITY



FULLY ACCESSIBLE



HIGH PHYSICAL SUPPORT

enliven HOUSING

Enquiries 1300 ENLIVEN
enlivenhousing.com.au

