

TYPE 01

Internal Area 75 m²

External Area 10 m²

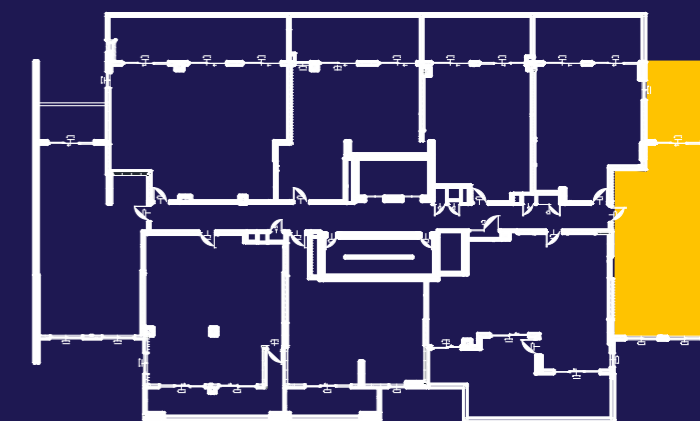
TOTAL AREA 85 m²



NOTE: DESIGNS SUBJECT TO CHANGE



Victoria Street



Regent Street



**IMPROVED
LIVEABILITY**



**FULLY
ACCESSIBLE**



**HIGH PHYSICAL
SUPPORT**

enliven HOUSING

Enquiries 1300 ENLIVEN
enlivenhousing.com.au