

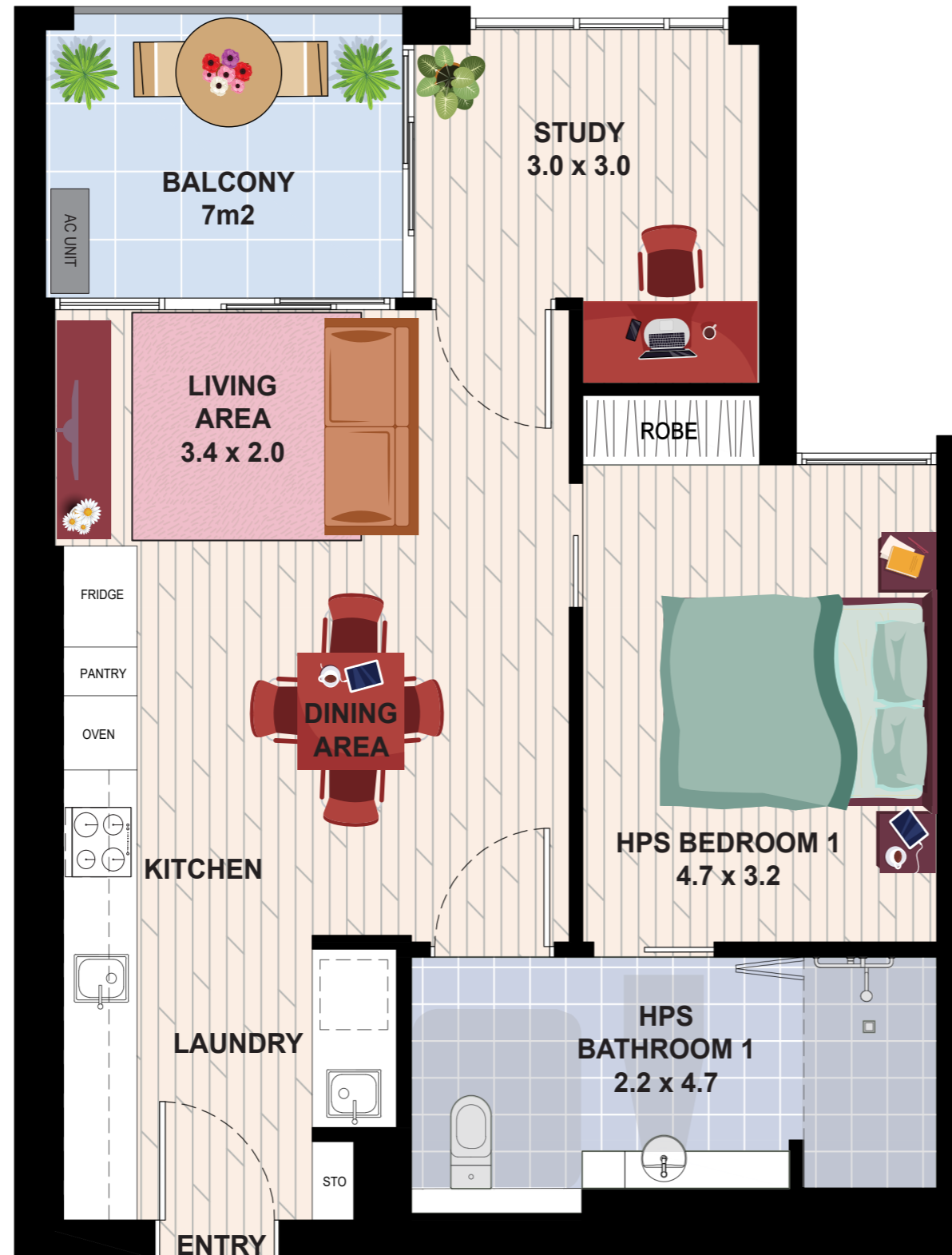
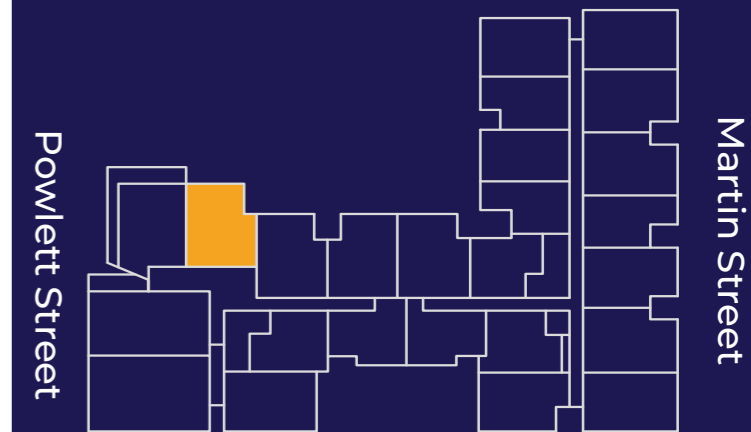
MARTIN & POWLETT
9-11 Martin St, 12 Powlett St
HEIDELBERG VIC 3084

TYPE 04

Internal Area 75 m²

External Area 7 m²

TOTAL AREA 82 m²



NOTE: DESIGNS SUBJECT TO CHANGE



**IMPROVED
LIVEABILITY**



**FULLY
ACCESSIBLE**



**HIGH PHYSICAL
SUPPORT**

enliven HOUSING

Enquiries 1300 ENLIVEN
enlivenhousing.com.au