

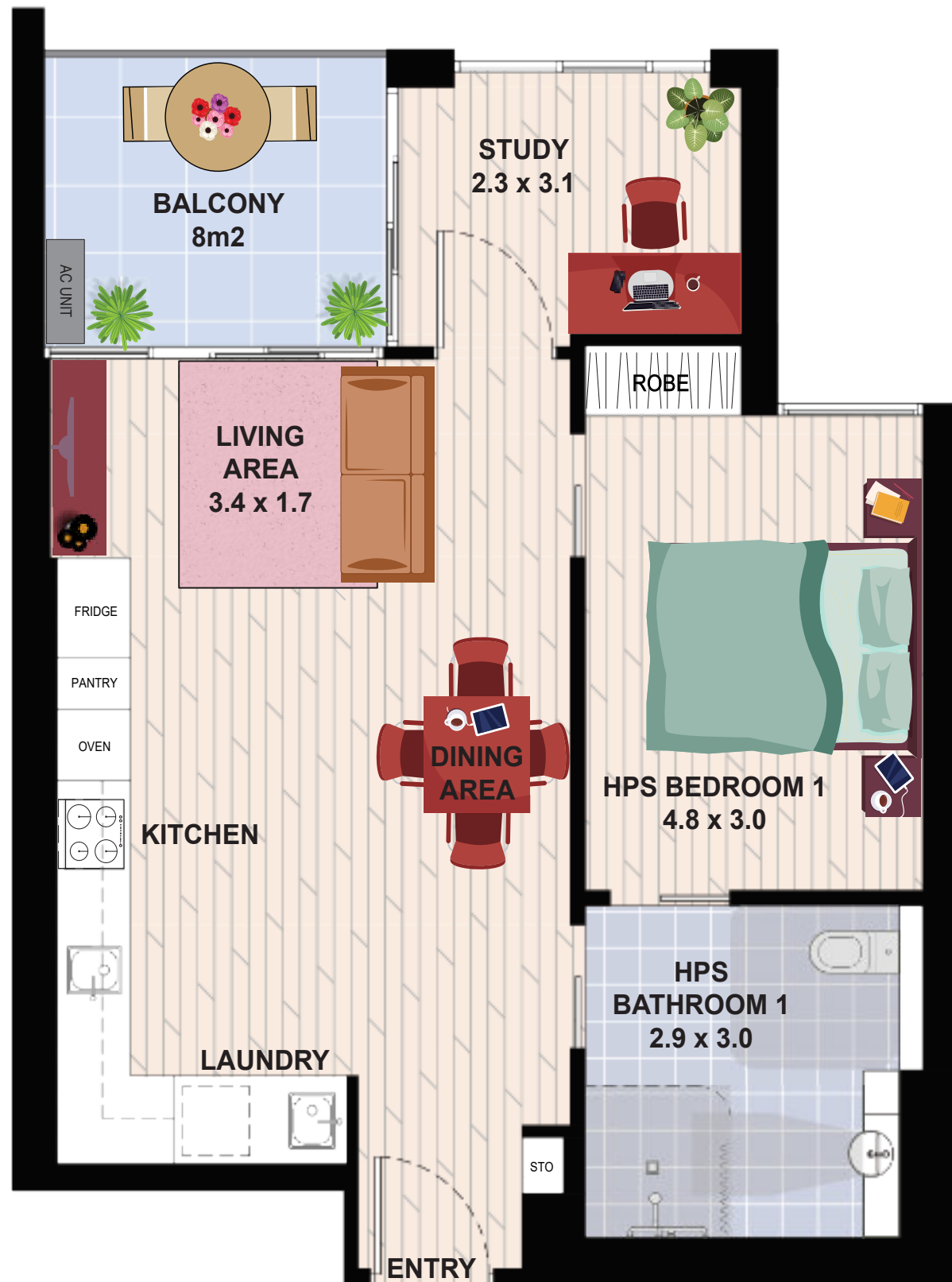
MARTIN & POWLETT
9 Martin St, 12 Powlett St
HEIDELBERG VIC 3084

TYPE 05

Internal Area 73 m²

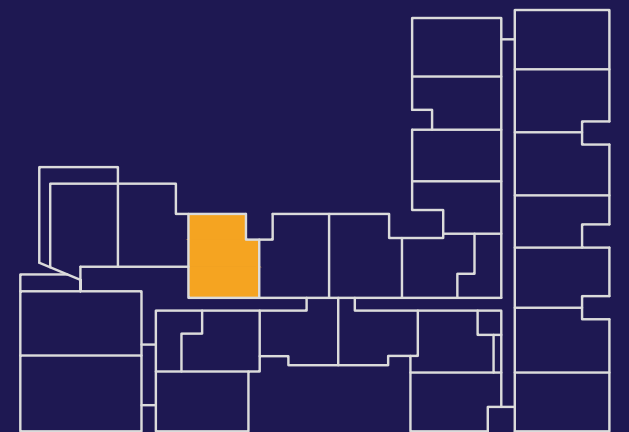
External Area 8 m²

TOTAL AREA 81 m²



NOTE: DESIGNS SUBJECT TO CHANGE

Powlett Street



Martin Street



IMPROVED
LIVEABILITY



FULLY
ACCESSIBLE



HIGH PHYSICAL
SUPPORT

enliven HOUSING

Enquiries 1300 ENLIVEN
enlivenhousing.com.au