



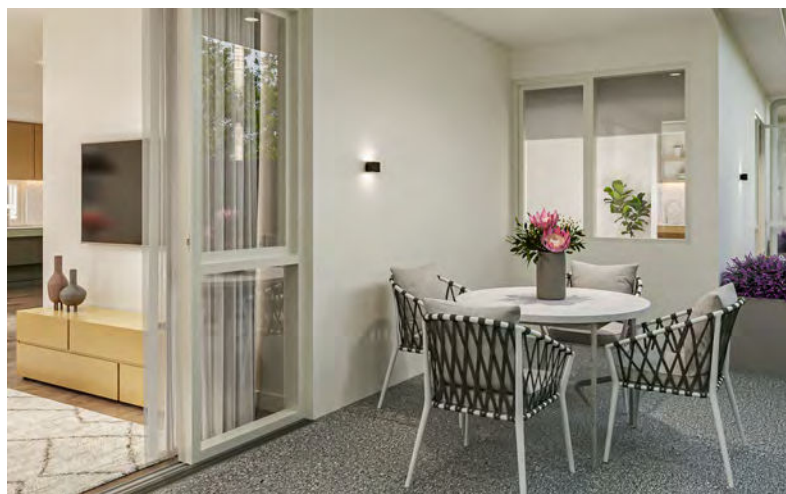
Mentone, VIC

The Isadora

enliven
RESIDENCES

Enquiries 1300 ENLIVEN

enlivenhousing.com.au



The Isadora

This modern two-bedroom SDA home blends comfort, style and accessibility. Each bedroom features a private ensuite and direct outdoor access for added convenience. The open-plan kitchen, dining and lounge area flows seamlessly to a private outdoor space – perfect for relaxing or entertaining. Quality finishes like stone benchtops, timber cabinetry and soft neutral tones create a warm, contemporary feel throughout.

Features

- Pet Friendly
- Provision for AT
- Wheelchair accessible.
- Provision for automatic doors
- Provision for ceiling hoist
- Air conditioning

Live your best life in Mentone

Nestled in a prime location, the Isadora offers exceptional convenience. With Mentone Mart, Thrift Park Shopping Centre and Mentone Medical Clinic within just a kilometre, you can enjoy easy access to everyday essentials, local shops and healthcare services. Plus, enjoy easy commuting with plenty of public transport options around

This Mentone home is built to support SDA design standards for Improved Liveability, Fully Accessible and High Physical Support categories including Onsite Overnight Assistance (OOA).

Available Houses

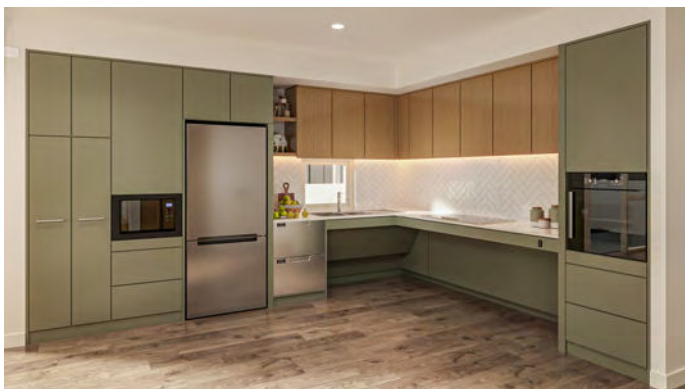


House 01 Bedroom 01



FEATURES

- Generous proportions, 31m² of bedroom and ensuite space, 134m² of common internal space and an additional 221m² of external space
- Engineered timber flooring, stone bench tops with floor to ceiling windows
- Combo washer dryer
- Full Assistive Technology provisioned
- Fully accessible



House 01 Bedroom 02



FEATURES

- Generous proportions, 31m² of bedroom and ensuite space, 134m² of common internal space and an additional 221m² of external space
- Engineered timber flooring, stone bench tops with floor to ceiling windows
- Combo washer dryer
- Full Assistive Technology provisioned
- Fully accessible