

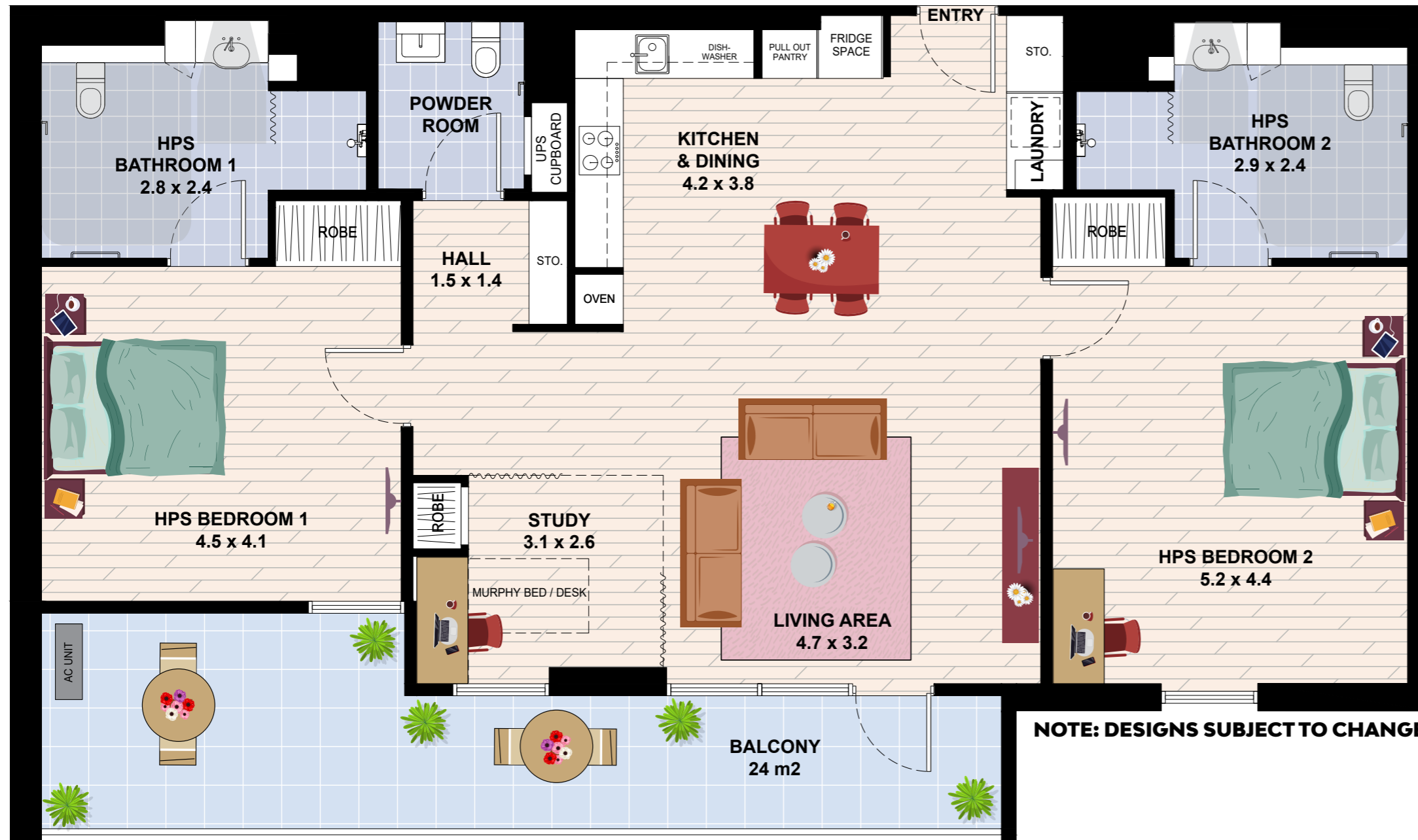
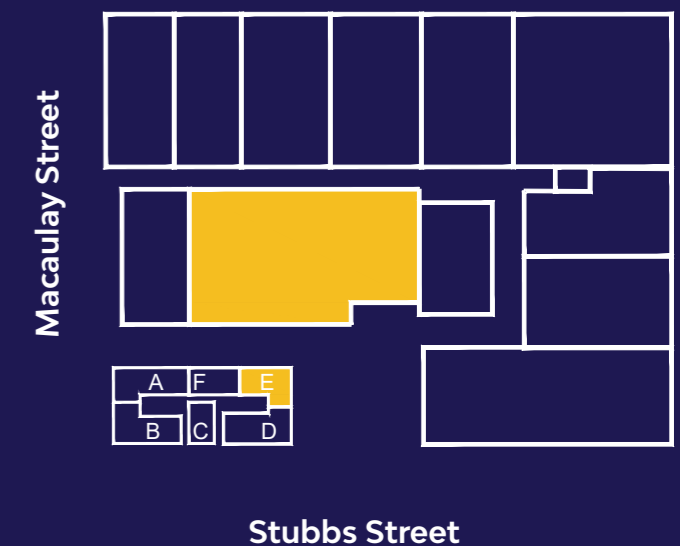
KENSINGTON
346-350 Macaulay Road
KENSINGTON VIC 3031

TYPE 2

Internal Area 129 m²
 External Area 21 m²
TOTAL AREA 153 m²



BUILDING "E"



IMPROVED LIVEABILITY



FULLY ACCESSIBLE



HIGH PHYSICAL SUPPORT



Enquiries 1300 ENLIVEN
enlivenhousing.com.au

